



Modern Prairie



Wine Country



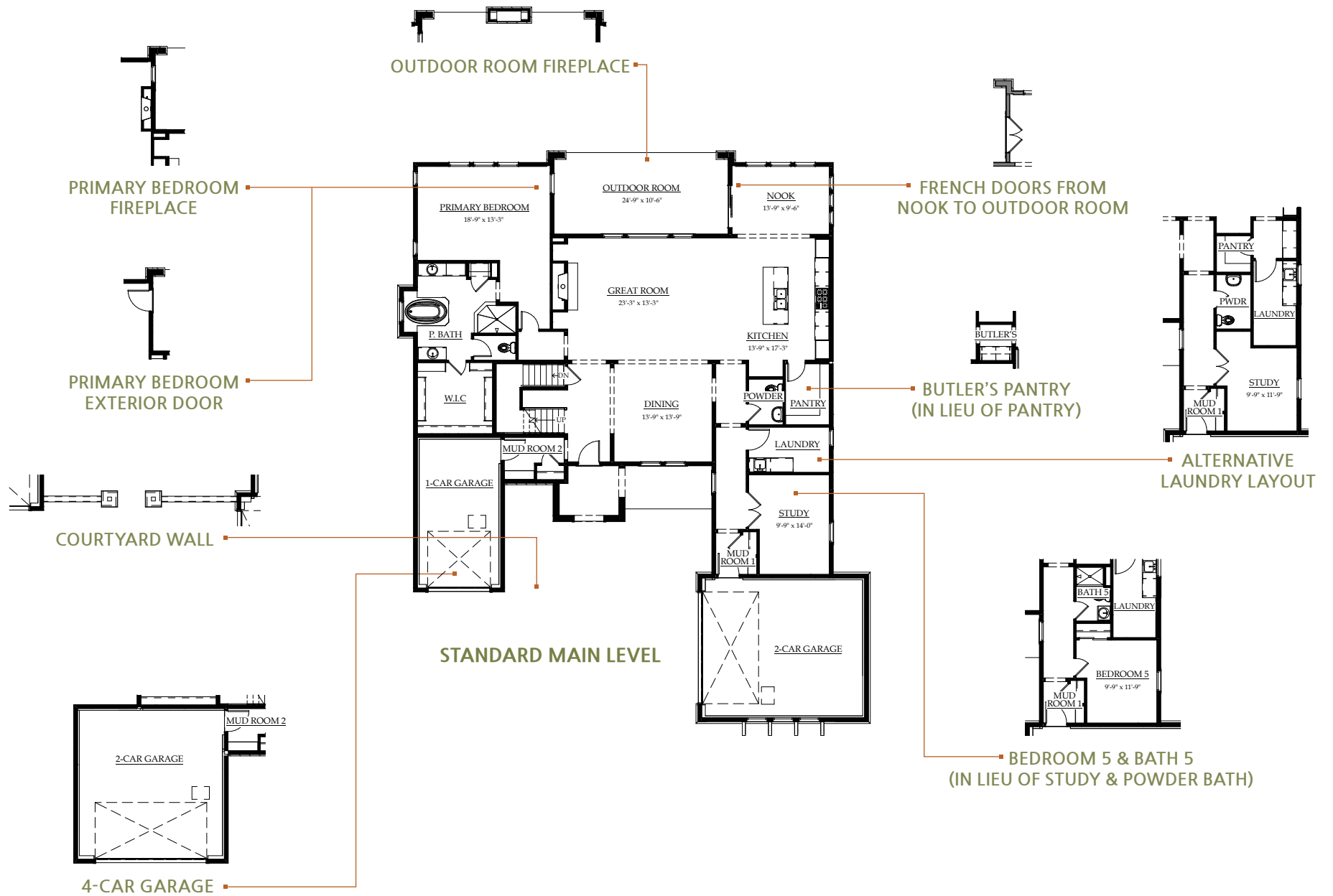
Modern Farmhouse

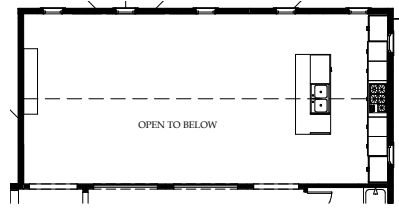
**CELEBRITY**  
Custom Homes

**PLAN SIX: MAIN FLOOR PRIMARY BEDROOM**

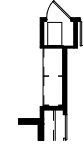
3,564 finished square feet ♦ 3 to 8 bedrooms

3.5 to 7 baths ♦ 3- to 4-car garage

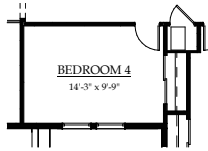




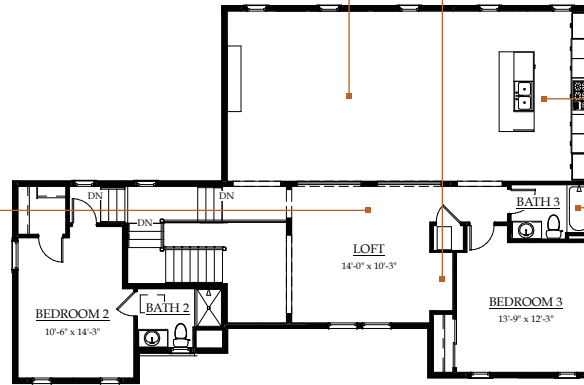
VAULTED CEILING IN KITCHEN/GREAT ROOM



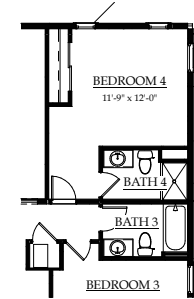
BASE CABINETS AT NICHE



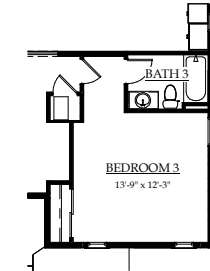
BEDROOM 4 (IN LIEU OF LOFT)



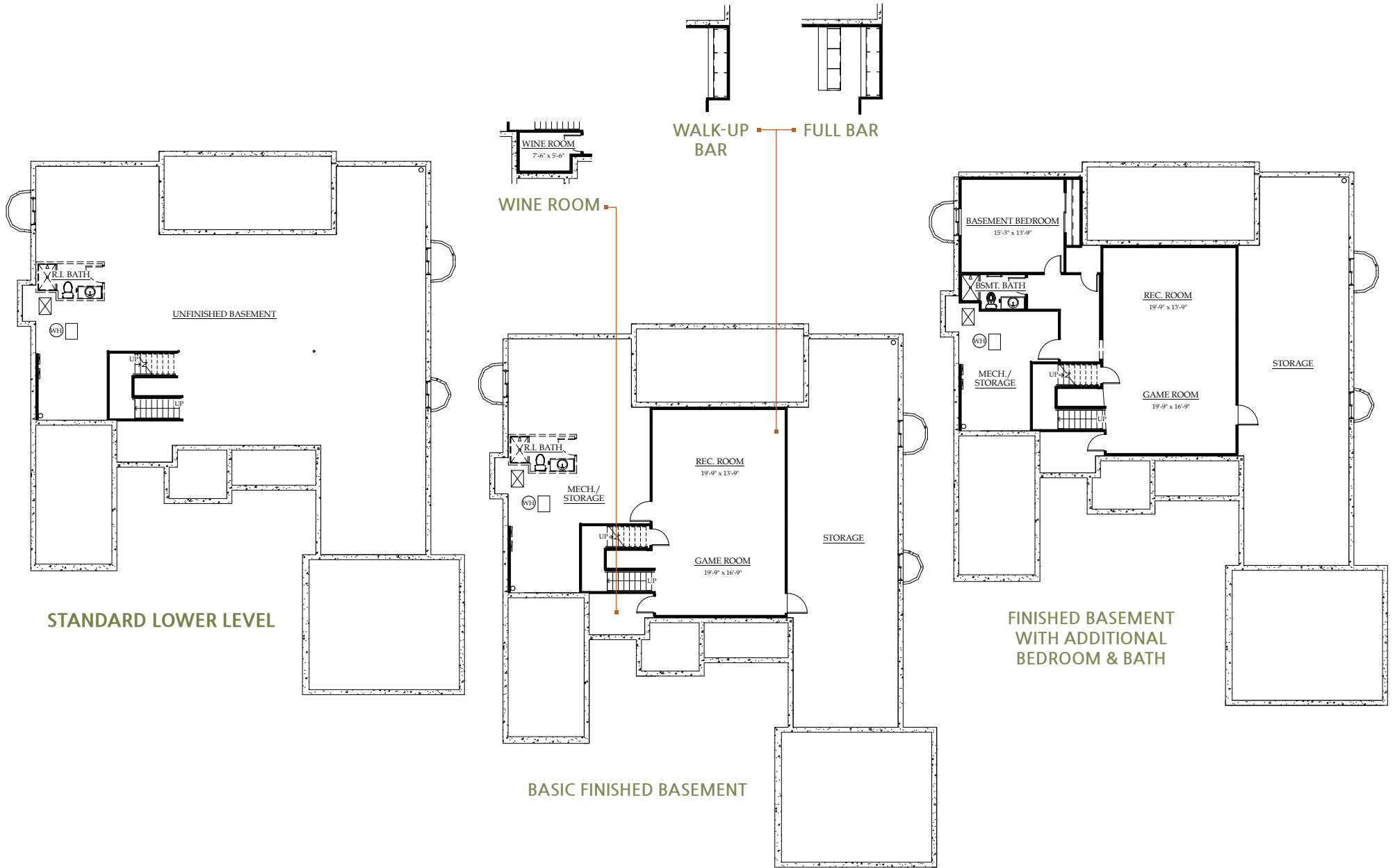
STANDARD UPPER LEVEL

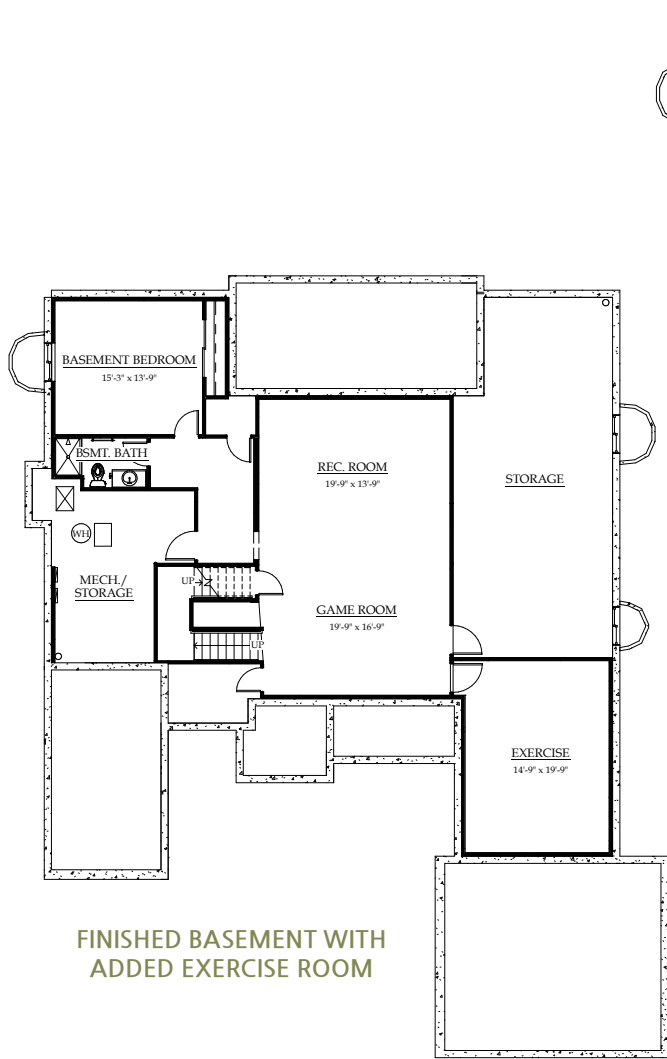


BEDROOM 4 & BATH 4 OVER KITCHEN

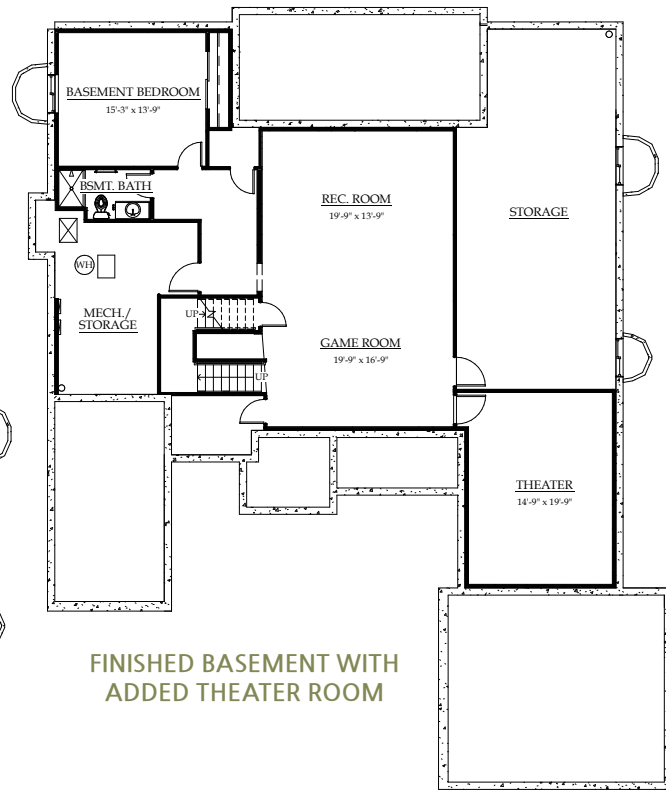


PRIVATE BATH WITH BEDROOM 3

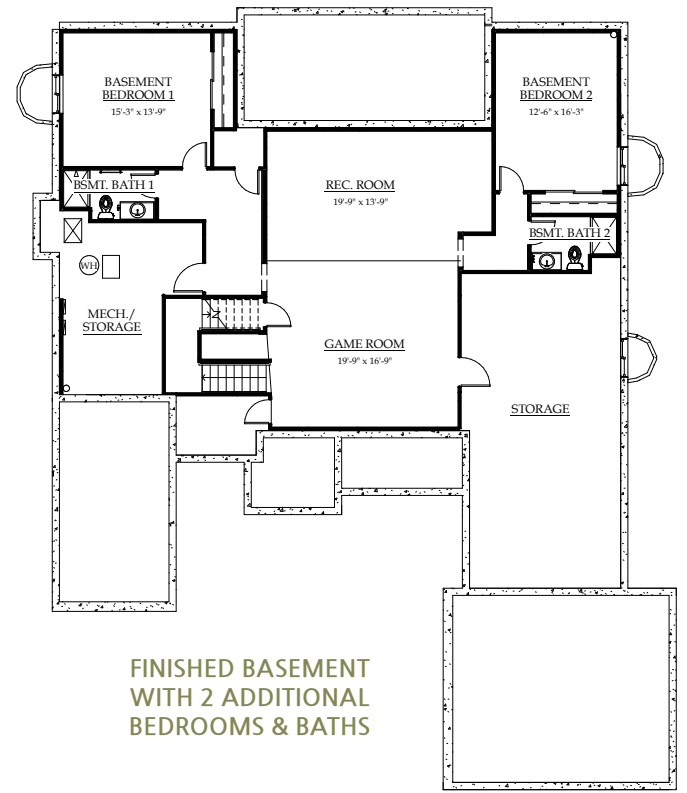




FINISHED BASEMENT WITH  
ADDED EXERCISE ROOM



FINISHED BASEMENT WITH  
ADDED THEATER ROOM



FINISHED BASEMENT  
WITH 2 ADDITIONAL  
BEDROOMS & BATHS